



Harborton Reliability Project Phase 3

April 17, 2025

Randy Franks
Sr. Project Manager, Portland
General Electric

Noah Herlocker
Sr. Ecologist, David Evans & Associates

David Petersen
Partner, Tonkon Torp LLP



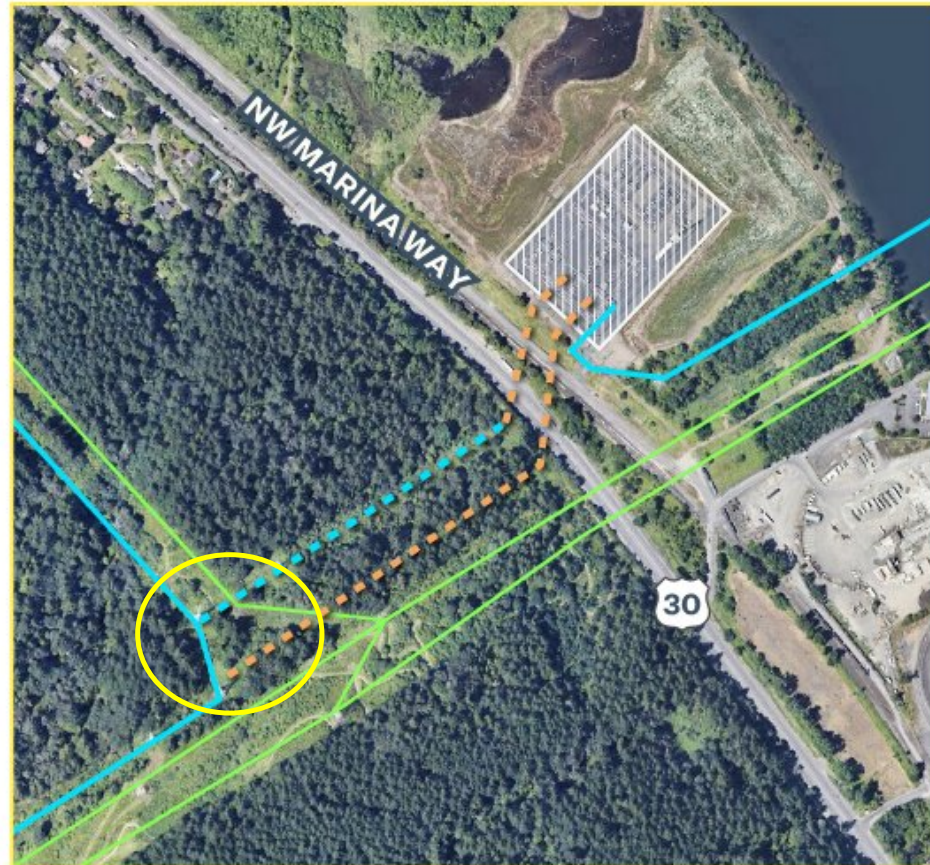


Project location



- Upgrades 1970's-era transmission lines
- Located within an established utility right-of-way

Harborton adds needed connectivity, improving reliability to benefit Portland



- Existing PGE Transmission Line
- Existing BPA Transmission Line
- - - Proposed New Transmission Line
- . - . Upgrade to Existing Transmission Line

Harborton relieves a transmission chokepoint in our grid



- Reduces the risk of outages projected as early as 2028, particularly in extreme weather when energy demand spikes
- Helps integrate clean energy to meet climate goals
- Improves system safety, including helping to address wildfire risks throughout Forest Park



Portland homes and businesses are at risk



North Portland



Northwest Portland

The right project, in the right location...

The Hearings Officer found:



"[T]here is a **need for the project...**"



"...has the **least significant** detrimental environmental impacts..."



"...routing through [the existing utility corridor in] Forest Park is the **best practicable option...**"



The process to date

JUNE 2022

- Early Assistance

2023

- Examined Alternatives, Performed Site Evaluation

MAY 2024

- Type III Land Use Submittal

MAY - OCT 2024

- Community Outreach

SEPT - OCT 2024

- Workshops with Staff, Complete Application

JAN 2025

- Land Use Hearing, Decision



We examined all alternatives

2022 - TOTH REPORT ANALYZED 8 ROUTES AROUND FOREST PARK

2023 - PGE ATTEMPTED TO RESOLVE SEVERE IMPEDIMENTS

2024 - DETAILED ANALYSIS OF >20 ALTERNATIVES - INCLUDING FLAWED ROUTES

"The Hearings Officer finds the alternatives analysis provides credible, substantial and persuasive evidence that of all the options considered, there are **no practicable alternative locations outside of Forest Park.**"

...done the right way, for Forest Park

The Hearings Officer found the mitigation plan and project proposal:



"[T]horoughly and extensively addresses goals of **improving water quality** and **aquatic habitat.**"



"...will protect Forest Park's native plant and animal communities."



"**extensive** and **robust.**"



The project complies with City code



City policy on utilities in Forest Park



Forest Park Dedicated

BPA transmission lines already existed in the park.



Grants PGE Easement

Including the right to “erect, operate, maintain, repair, rebuild” power lines and
“to remove, top, limb, all alder, maple, fir and other large trees.”



Forest Park Natural Resources Mgmt Plan - Page 217

Creates exceptions for projects that disturb 10,000+ sq. ft. of soil or vegetation.



In Lieu Fee Ordinance No. 191314 Adopted 6/7/2023

Specifically, to improve mitigation of ongoing development and maintenance of existing utility corridors in the park.

Appendix I Blumenauer/Hales Letter 10/23/2024

“The NRMP offers guidance for the City and utilities to collaborate on conservation goals... not to prohibit any future development for this purpose.”

Approval criteria



Hearings Officer finding: all applicable approval criteria are met

1

Need

- Increase in demand
- Existing bottleneck
- Reliability standards

3

Consistency with

- NRMP Goals and Strategies
- Environmental and NW Hills plan district regulations
- “meet[ing] other City goals...regional, state, and federal goals and regulations”

2

Lack of Practicable Alternatives

- Proposal has the “least significant detrimental impacts of the practicable alternatives”

4

Adequacy of Mitigation

- “extensive and robust”
- \$2.5mm of in-lieu fees to fund PP&R mitigation work



Mitigation to protect Forest Park's ecosystems

Improves nearly 8 acres for every 1 impacted



In the Project Area

- **400+** new Oregon white oaks
- **500+** smaller trees, shrubs
- **8,800** native plants
- **2.5** acres native shrub habitat
- **Doubles** local Oregon white oak
- Improves stream function
- Enhances riparian habitat
- Offsets **0.1% loss** of common forest type
- Increase biodiversity for **200+** wildlife species
- Native seed mix expands pollinator corridor, support

In Forest Park

- **\$2.5M funding** for Portland Parks & Recreation
- **25 acres** of ladder fuels removed
- **2 wetlands** built for Northern red-legged frog breeding habitat
- **2 meadows** reforested (Keilhorn, Newton Creek) – removing invasives, establishing native trees

City-wide

- Expand urban tree canopy, sequester carbon, in Portland neighborhoods with identified “heat islands”



Dispelling misinformation

MYTH: Approving this creates a slippery slope

FACT: This project stands alone

This project has independent value. It does **not** make any future potential phase any more likely or inevitable.

“

...Phase 3 should be evaluated independent of future phases and in recognition that future phases will be subject to independent land use review.

”

– Decision of the Hearings Officer

MYTH: PGE will fill streams, wetlands

FACT: PGE's mitigation plan improves aquatic habitat



Stream



Low-quality wetlands



MYTH: Routes on NW Marina are viable

FACT: They are not viable

Fatal flaws:

- Would require regulatory taking of private land, businesses
- High likelihood of landowner resistance, legal opposition
- Adverse effects on cultural resources, sensitive environmental resource
- Creates new impacts in protected forestlands and riparian corridors outside Forest Park
- Still impacts trees and wetlands in Forest Park
- Even assuming fatal flaws can be overcome, could not happen before projected risk of outages

No other project is feasible



The Harborton Reliability Project

- ✓ Is urgently needed for Portland.
- ✓ Is the only feasible project meeting the needs.
- ✓ Will improve the park, biodiversity, climate and wildfire resilience, habitat.
- ✓ Is consistent with City code.



Supported by

- Columbia Corridor Association
- Greater Portland Inc.
- Northwest Industrial Business Association
- Oregon Business for Climate
- Port of Portland
- Portland Metro Chamber
- Swan Island Business Association
- TriMet
- Working Waterfront Coalition
- Brickworkers and Allied Craftworkers Local 1
- Columbia Pacific Building Trades
- Heat & Frost Insulators and Allied Workers Local 36
- IBEW Local 48
- IBEW 125
- Ironworkers Local 29
- Operating Engineers Local 701
- Oregon and Southern Idaho District Council of Laborers
- United Union of Roofers, Waterproofers and Allied Workers Local 49
- Numerous individual union members



Thank you