

August 19, 2025

Wilsonville

Power Together | Community Open House



The background of the slide is a scenic landscape. In the foreground, there is a field of purple lavender flowers. Behind the field, a wooden fence runs across the middle ground. In the background, there are several tall evergreen trees and a large, snow-capped mountain peak under a clear blue sky.

Welcome!

A photograph of a large concrete dam with multiple spillways. Water is cascading over the spillways, creating white foam and rapids below. The dam structure is dark and industrial, with some walkways and railings visible on top.

AGENDA

- How the electrical grid works
- Building the grid of the future
- Wilsonville projects
- Q&A

How the electrical grid works

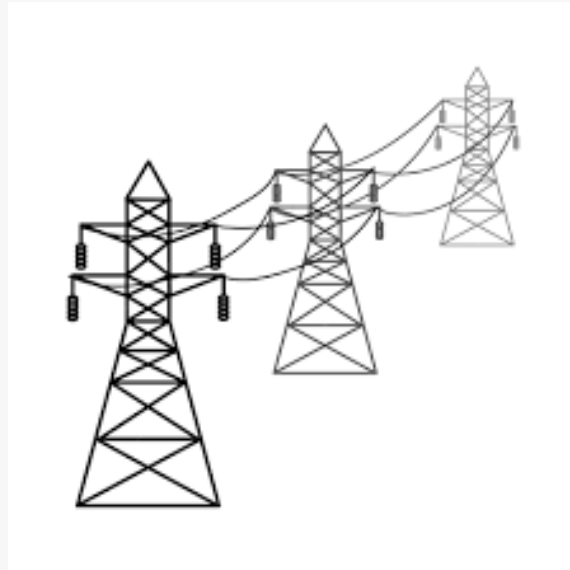


Building the grid of the future



- Renewable energy resources
- Expanded transmission
- Wildfire hardening
- Grid scale storage
- Distributed energy storage
- Distributed energy resources
- Smart homes
- Demand response
- Electric vehicles
- Energy efficiency
- Microgrids

Transmission is the bottleneck



=

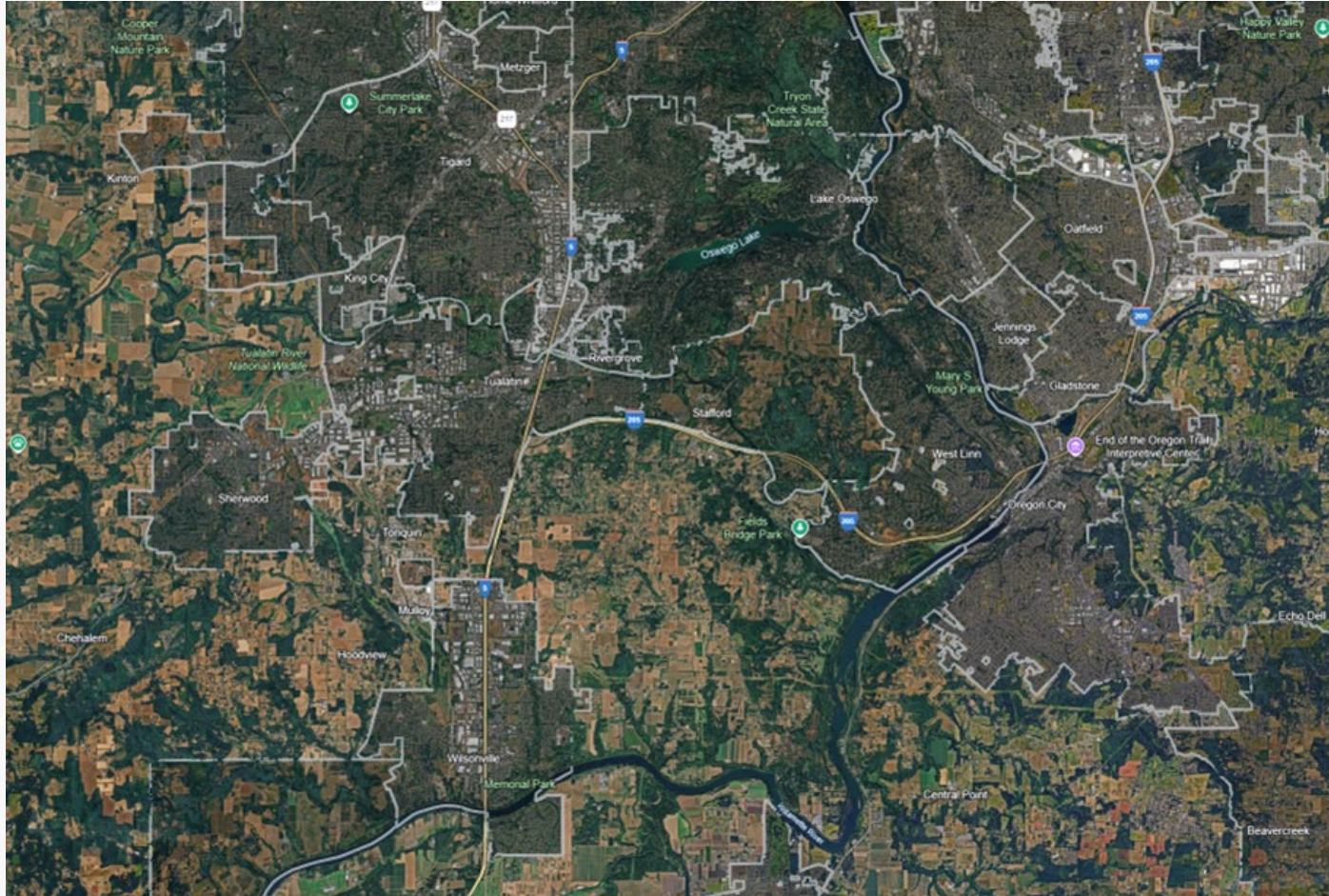


2025



2030

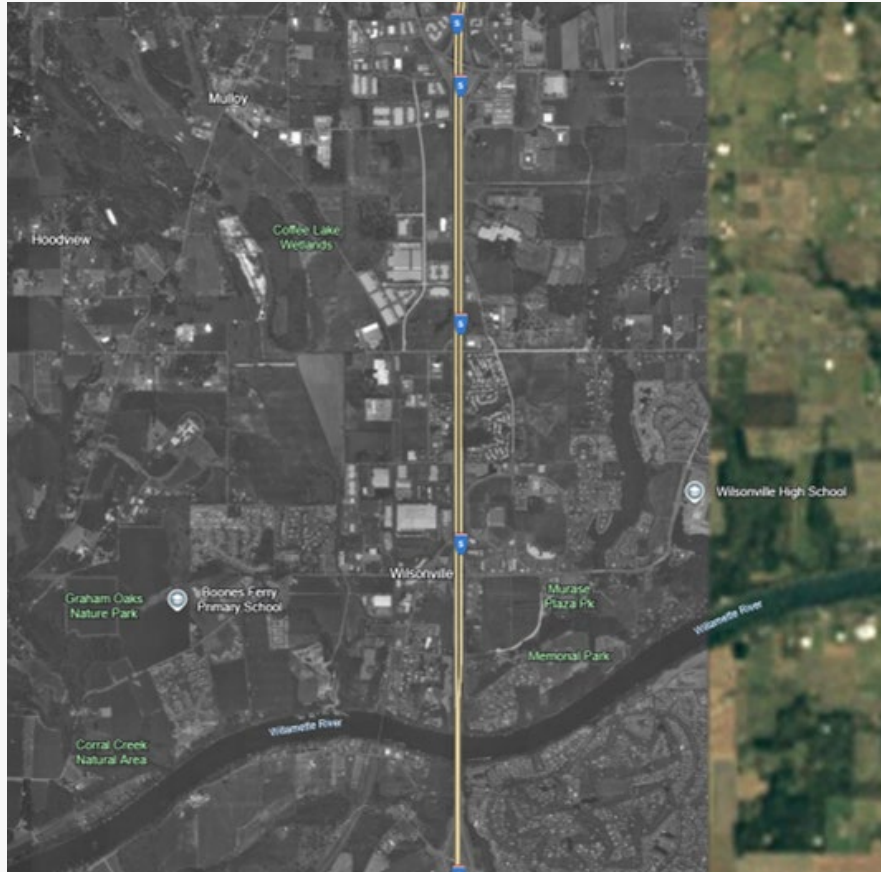
A growing urban area



The Metro Area has nearly doubled from 1.3 million to 2.5 million people over the past 30 years.

That represents a lot more homes and businesses requiring reliable, affordable power.

Wilsonville growth over time



1994 Population: 9,680



2024 Population: 27,048

Community and regional benefits



Meeting Growing Energy Demand

- Supports population growth
 - Wilsonville population has tripled in 30 years between 1994 and 2024¹
- Serves Wilsonville, Clackamas County, surrounding areas

Strengthening the Electrical Grid

- Reduces outages, improves restoration times
- Increases capacity of transmission lines and substations
- Adds redundant pathways for resilience, reliability
- Accommodates changing electricity flows

Supports Critical Infrastructure and Economic Development

- Business and industrial growth

¹Portland State University Center for Population Research and Census

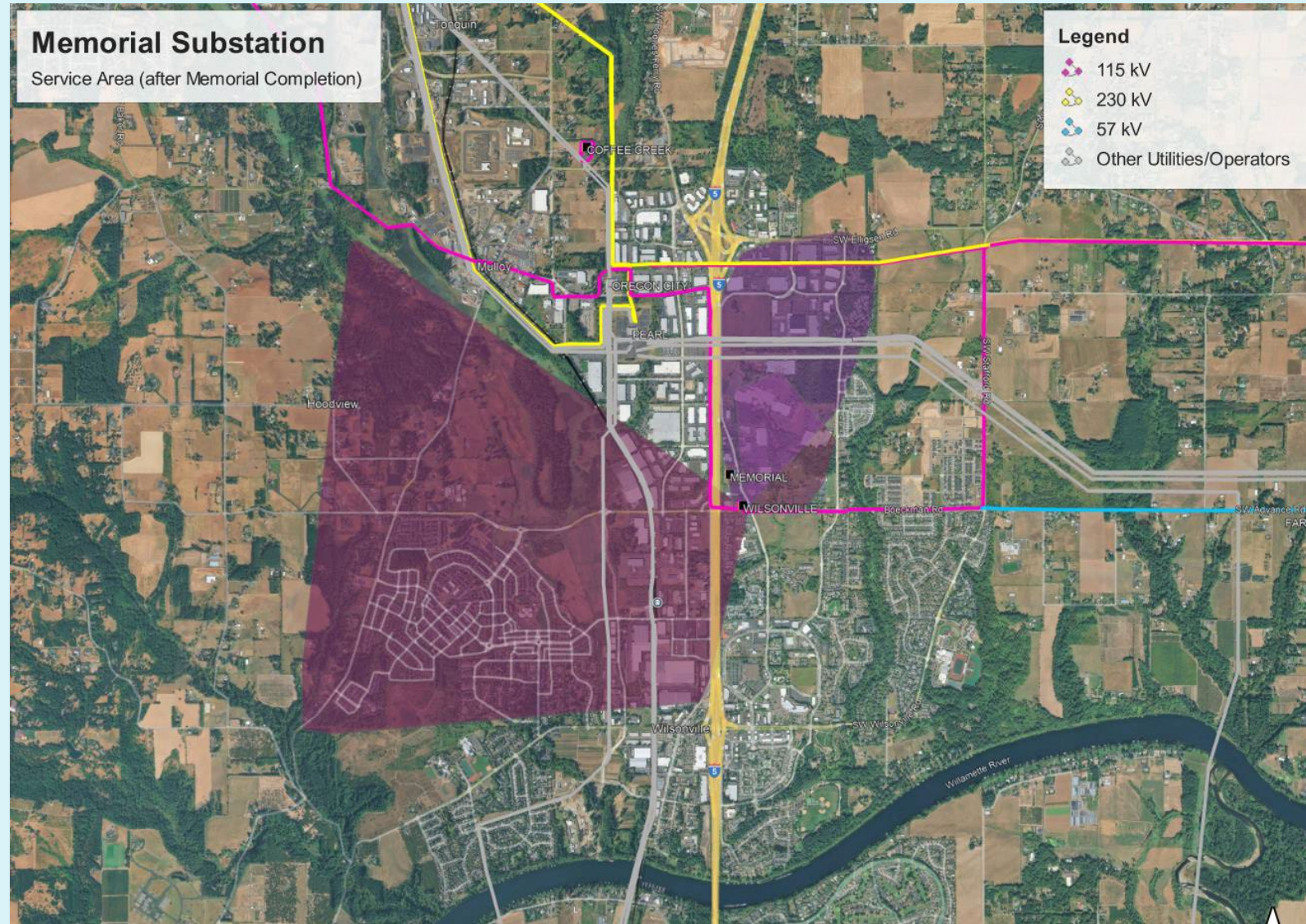
Wilsonville Area Projects

- Memorial Substation & Distribution Feeders
- Tonquin Project
- Westside Upgrade Project
- Maintenance Program

Memorial Substation



Memorial Substation

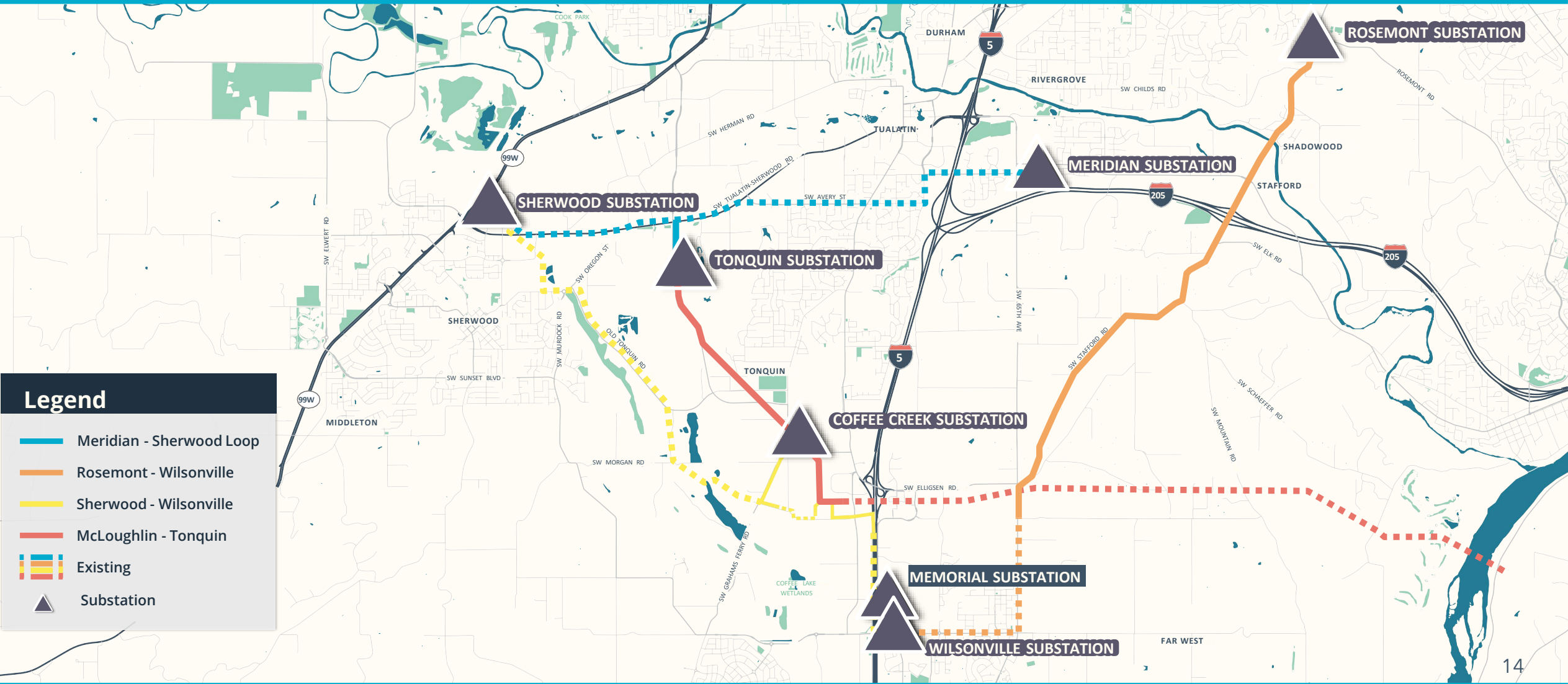


Memorial Substation At Night



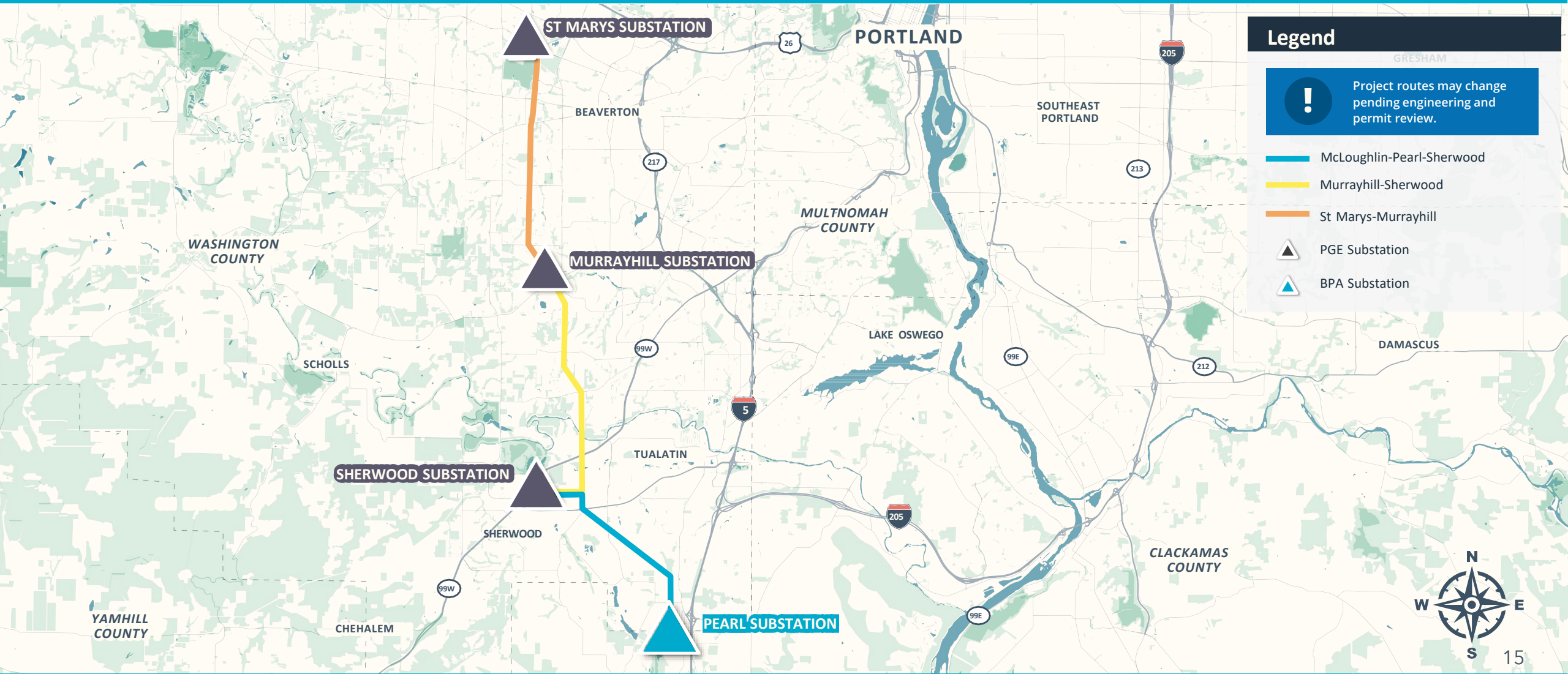
Tonquin Project

Overview Map



Westside Upgrade Project

Overview Map



Coming soon: routine pole inspections, repairs and upgrades



- PGE systematically inspects about 27,000 wooden power poles every year
- Includes overhead equipment in PGE's transmission and distribution system
- PGE makes necessary repairs to the National Electrical Safety Code and does work to extend the life of the pole
- Wilsonville, we'll see you soon!

Community Advisory Councils

- Regional community-focused advisory groups (Clackamas, Washington, Multnomah)
- The community's voice in helping power Oregon's clean energy future
- 20 members representing diverse interests that meet quarterly
- Recruiting membership in Q3 2025
- See Sign-In table if interested

Thank you

Questions? Email communityconnect@pgn.com