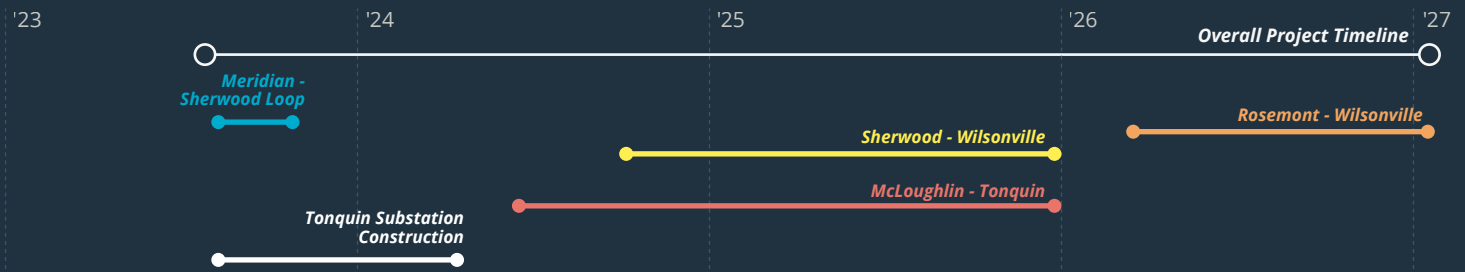


Tonquin Project



A multi-phase project that built a substation on existing PGE property and in 2023, began upgrading 11 miles of 115 kV transmission lines in Tualatin, Sherwood, Stafford, Wilsonville and unincorporated Clackamas County.

Timeline Schedule and scope are subject to change pending review.



Purpose and Need

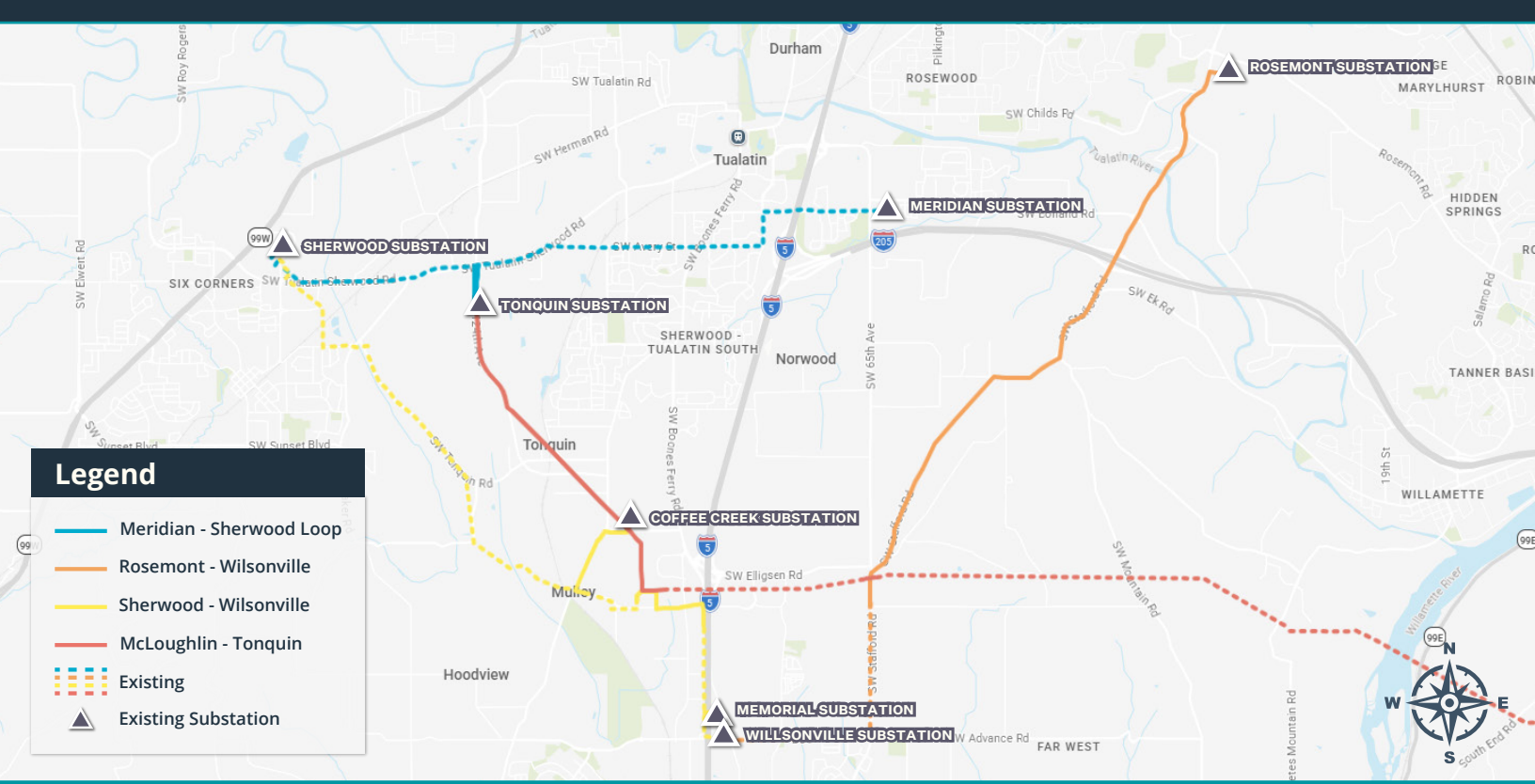
PGE is working toward Oregon's clean energy future, building a smarter, stronger and more flexible grid to deliver the power customers need today and into the future.

PGE's energy grid is the backbone of a system that brings reliable, cost-effective clean energy solutions to all customers. When complete, this project will strengthen PGE's system for generations to come.

Key Community Benefits

- Reduce power outages
- Strengthen system resiliency
- Meet growing energy demand





Typical Proposed Structures

This image helps illustrate the types of project elements, although final engineering and construction details may change pending public, regulatory and utility review.



Weathering Steel Monopole

Routes

The first project segment split an existing line along Tualatin Sherwood Road into a loop, creating two lines that run along SW 124th Avenue into the new Tonquin Substation. Next, a new line was built, using monopole structures along 124th Avenue, from the Tonquin Substation toward Wilsonville. We are upgrading structures within a power line corridor, connecting the Coffee Creek and McLoughlin substations. PGE will also add and replace structures along SW Grahams Ferry, Ridder and Boones Ferry roads. From there, the line will eventually cross Interstate Highway 5 and connect the Coffee Creek and Memorial substations. The final segment will begin at PGE’s Rosemont Substation and travel down SW Stafford Road toward Wilsonville. Along this route, taller poles will be installed to accommodate the existing and new lines. The new line will connect the Rosemont and Wilsonville substations, near Elligsen Road.

Questions? Comments?

More project information and updates are online, including a tool that allows you to ask questions or share comments about the project.

portlandgeneralprojects.com/tonquin



PGEPProjects@pgn.com

