

February 18, 2026

Conestoga Middle School, Beaverton

South Washington County

Power Together | Community Town Hall

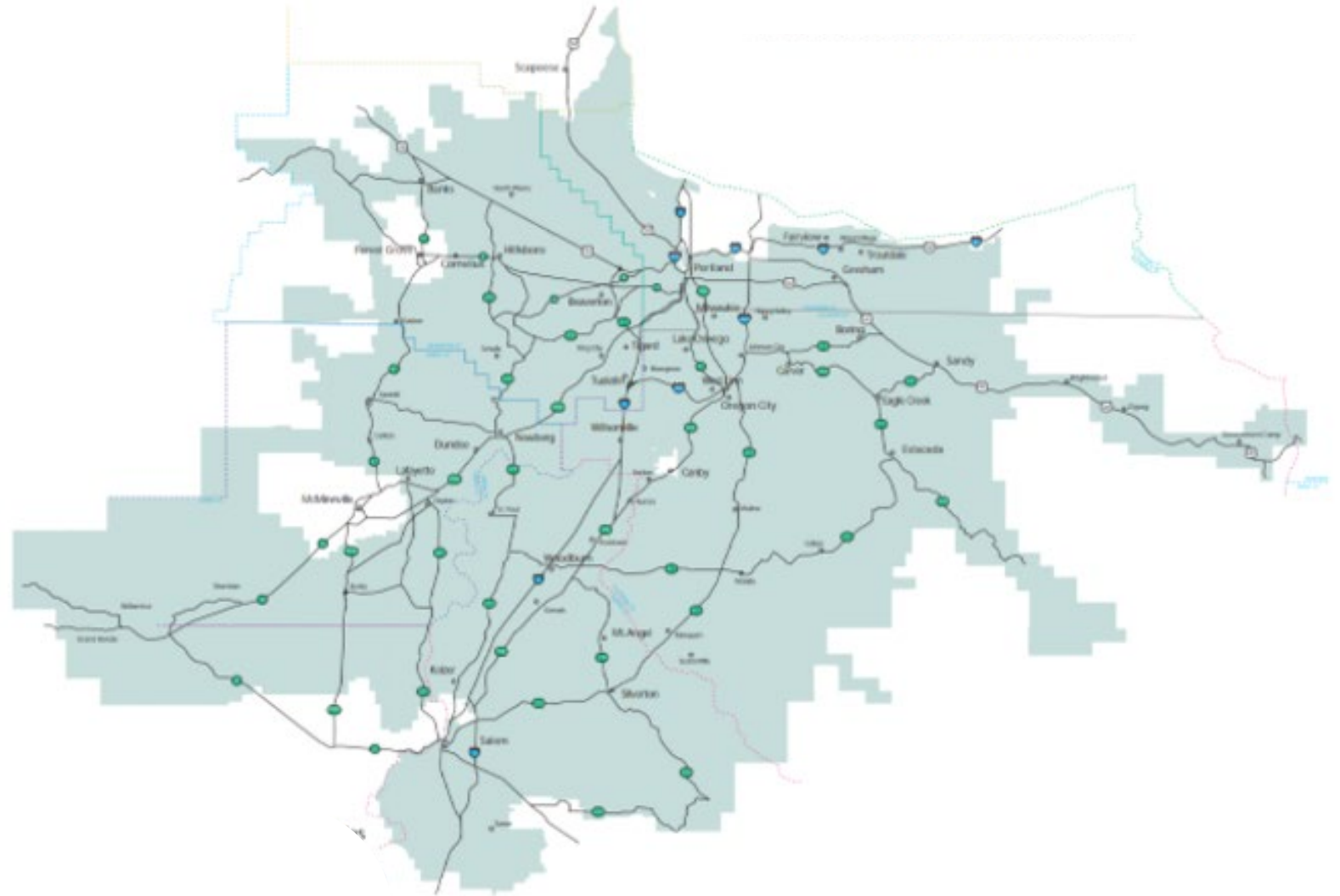


Agenda

- Welcome
- Electricity use and the grid
- System hardening
- Transmission and local projects
- Threats and preparedness
- PGE's Commitment to Customers
- Community Advisory Councils
- Q&A

PGE Service Area

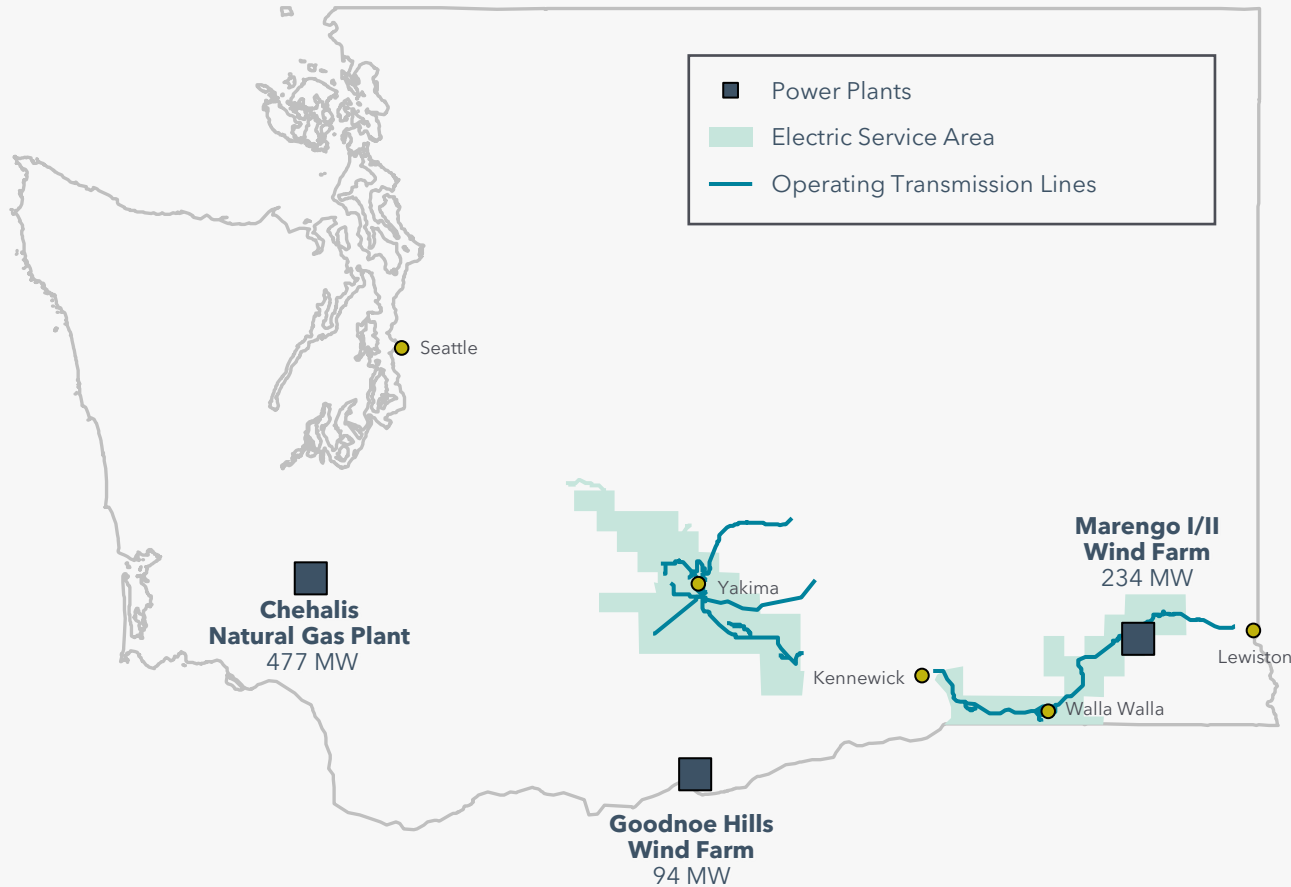
- 1.9 million population
- 7 counties
- 51 cities
- 4,000 square miles
- ~950,000 customers



Proposed acquisition of PacifiCorp service area in Washington*



Service Area

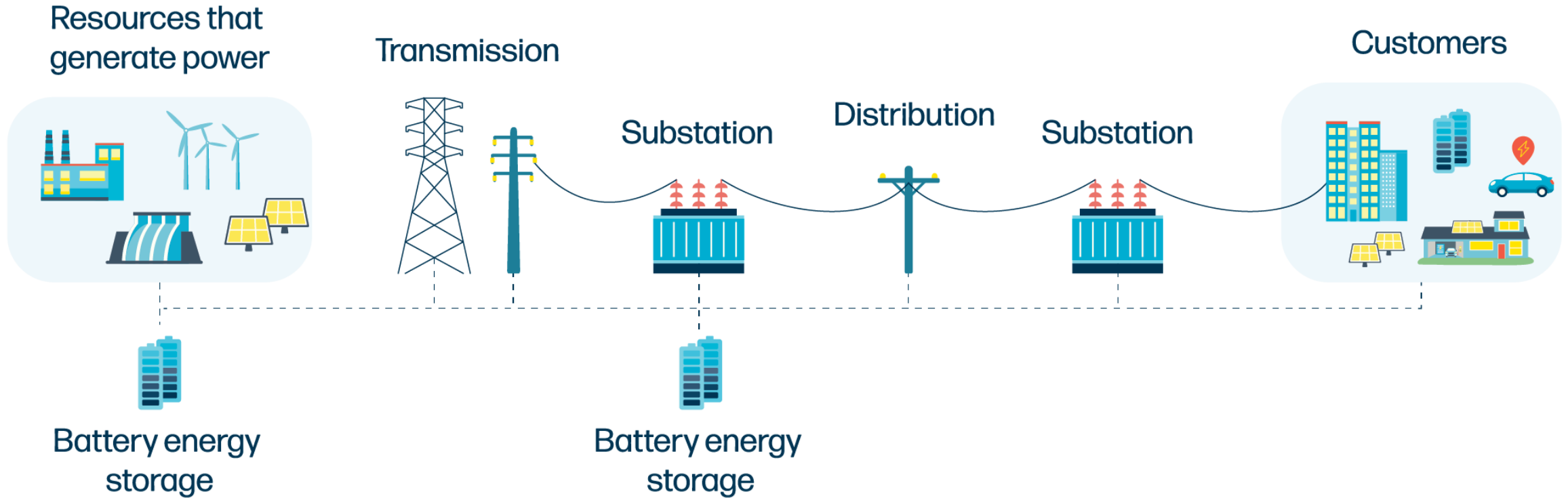


Summary Metrics

Customers	~140,000
Service Area	~2,700 square miles
Transmission Miles	~500 miles
Distribution Miles	~4,000 miles
Generation Capacity	~800 MW

*Subject to regulatory approvals

The grid is evolving to meet customer needs



The way we use energy is changing

PGE

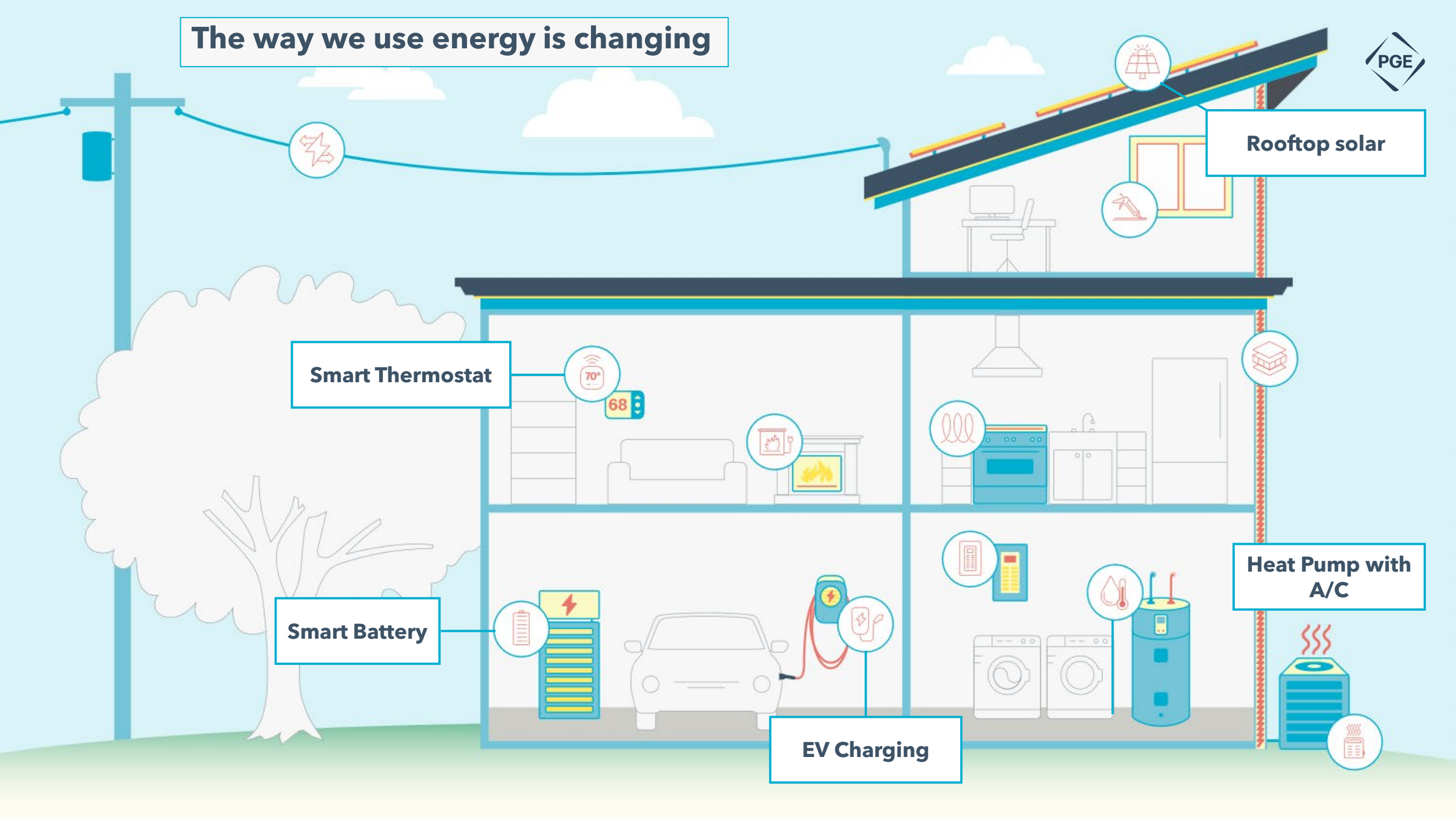
Rooftop solar

Smart Thermostat

Smart Battery

EV Charging

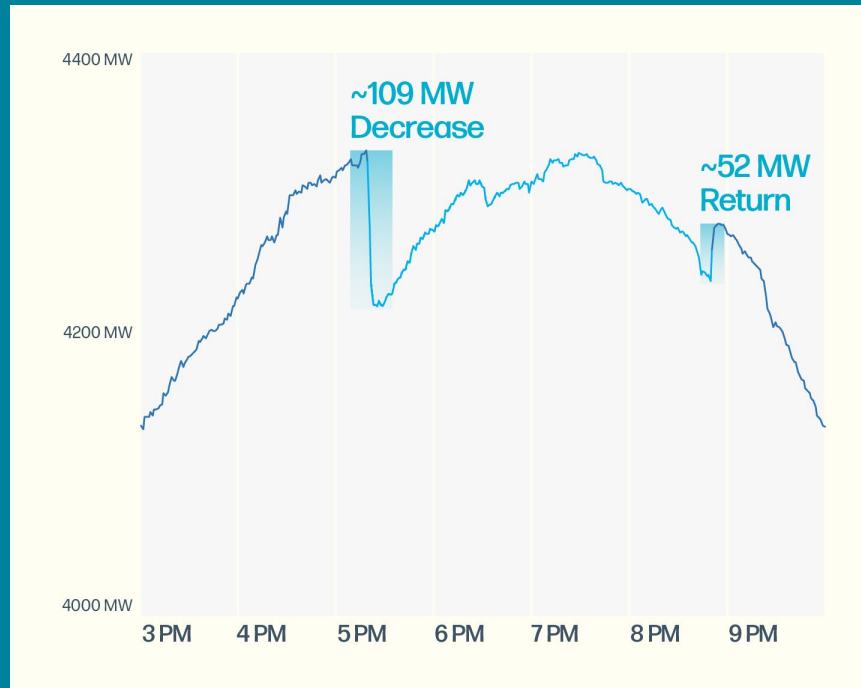
Heat Pump with A/C



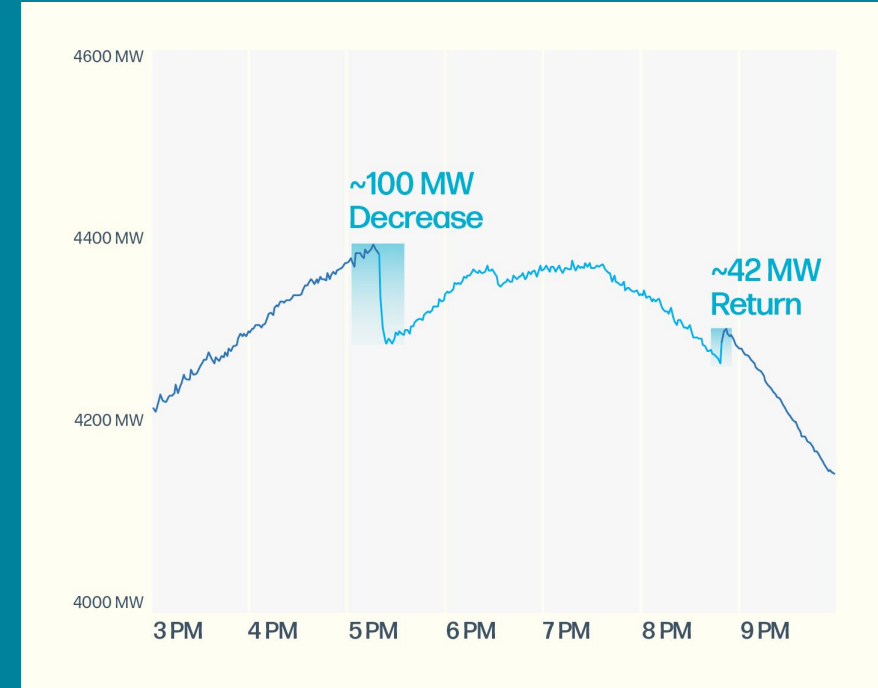
Customers actions make a difference

When demand is high PGE asks participating customers to reduce their energy use. In turn, customers receive rebates and help keep energy more reliable.

July 8, 2024



July 9, 2024



When customers need help, we're there



PGE supports customers with tools and programs to manage their energy costs including bill assistance, rebates and incentives, and solar and battery programs.



Payment help



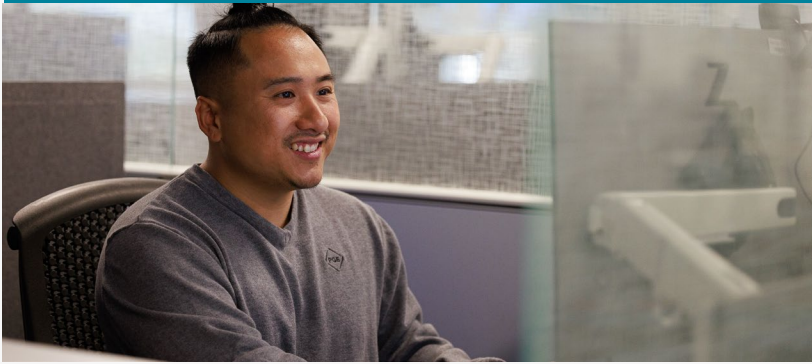
Efficiency, load management and weatherization support



Income qualified bill discount



Energy assistance programs



Our customer commitment

Controlling Operating Costs

- In 2025, we launched our Customer Affordability Commitment - a multi-year program designed to deliver sustained savings in operations and maintenance costs to keep customer bills as low as possible.

Ensuring Fair Cost Allocation

- PGE is fairly distributing the costs of new infrastructure to serve load growth from data centers/manufacturing to protect residential customers from price impacts while supporting economic growth.

Maximizing External Sources of Funding

- We are reducing project costs by optimizing federal tax credits, grants, and other incentives while available.



Local growth and energy use



96%
Population
Growth

78%
Of homes
have AC

#5

In EV sales
nationally

- The Portland metro area has **grown by 66%** since 1990, from 1.5 million to 2.5 million people. ¹
- **96%** population growth in Washington County since 1990, from 311,554 to 611,262¹
- **78%** of area homes had air conditioning in 2019, a 41% increase since 2011²
- **Fifth largest** retail market for EVs in the nation³
- **21** average number of smart devices per U.S. household, with internet, in 2024⁴
- Washington County has Oregon's largest tech industry cluster, with **\$13 billion** in computers and electronics exports in 2022⁵
- **Ninth largest** state for digital infrastructure, including data centers⁶

¹ U.S. Census data

¹ [KGW](#)

² NESCAUM data

² [Consumer Affairs](#)

³ [Greater Portland, Inc.](#)

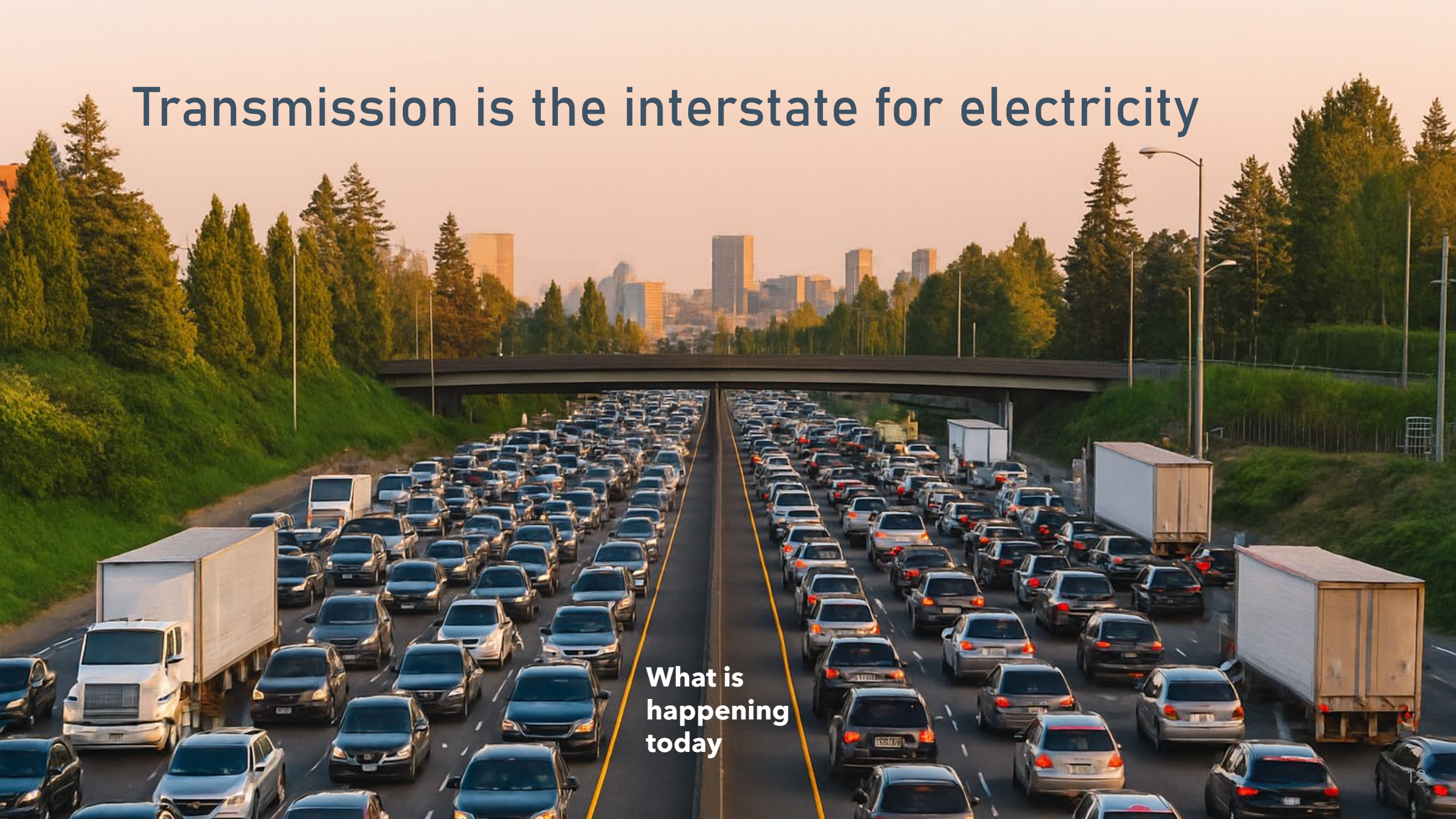
⁴ [Datacentermap.com](#)

Transmission is the interstate for electricity

What the system was built for

Transmission is the interstate for electricity

**What is
happening
today**



New technologies can increase capacity, flexibility, efficiency, and reliability



Advanced Conductor are new wires that can carry more electrical current, to make use of existing equipment and rights-of-way



Dynamic Line Ratings use sensors, real-time weather data to use lines to their fullest



Topology Optimization allows grid operators to reroute electricity to lines with available capacity



Advanced Power Flow Control software reconfigures how power flows across the transmission network, around constraints

Westside Upgrade Project



Westside Upgrade Project

Approximately 15-miles with three segments from Wilsonville to Beaverton.

Key Benefits:

- Uses an existing transmission corridor with no additional land needed
- Unblocks a critical transmission artery
- Accommodates surging renewable energy from California
- Stabilizes the regional grid
- Meets growing electricity needs
- Enhances system reliability



Project Construction Timeline



Looking North from SW
Ridder Road at the BPA Pearl
Substation in Wilsonville.



Existing

The 'Existing' photograph shows a dirt path leading north through a field of tall, yellowish-brown grasses. In the background, several utility poles with power lines are visible against a cloudy sky. To the right, a white building is partially obscured by trees.



Proposed

The 'Proposed' photograph shows the same dirt path and field of grasses as the 'Existing' view. However, several new utility poles have been added to the line, and the power lines are more densely packed. The background buildings and trees remain the same.

Looking North from SW Langer Farms Parkway in Sherwood. This section has already been constructed.



Previous



Existing

Looking Southwest from SW
Cipole Rd. near Hwy. 99 in
Tualatin.



Looking North from SW Barrows Rd. at the Westside Regional Trail in Beaverton.



Existing



Proposed

Advancing resilience against increased threats



Storms



Heatwaves and wildfires



Cyber and physical security



Cascadia earthquake



Regional energy emergencies

Resiliency Against Wildfire

System Hardening

- Overhead to underground conversion
- Ductile iron poles
- Enhanced Powerline Safety Settings

Situational Awareness

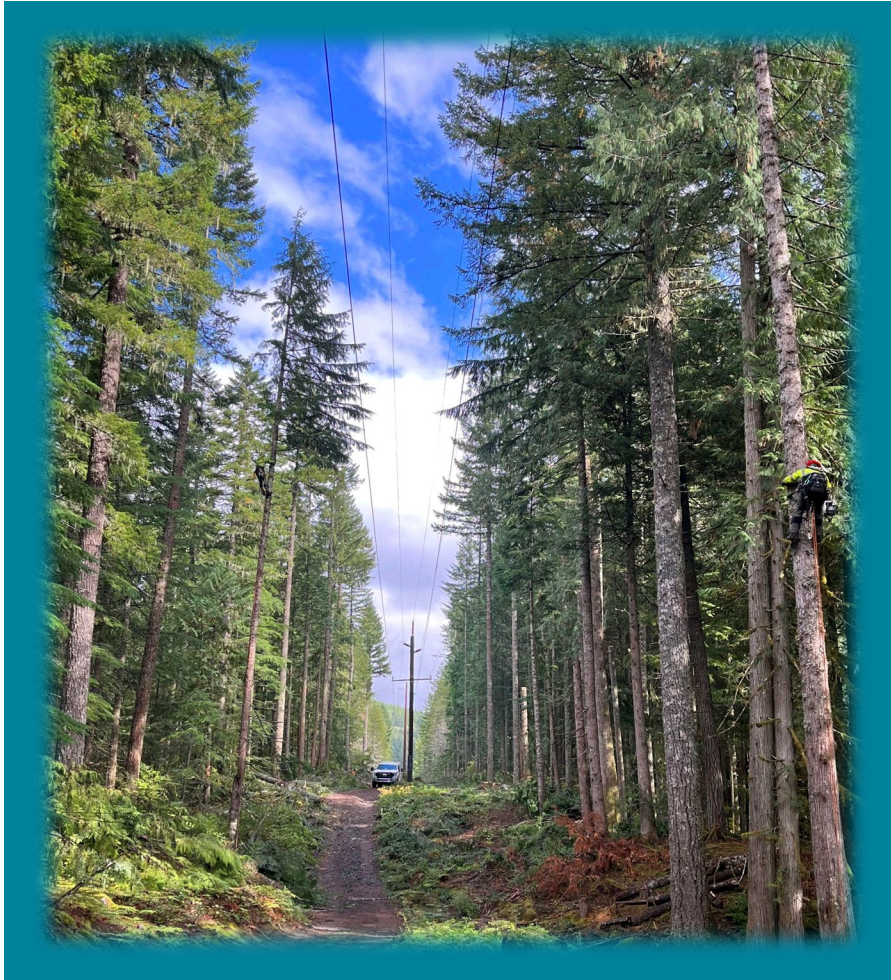
- More than 90 weather stations
- Almost 40 AI-powered fire detection cameras
- Early Fault Detection sensors

Inspections & Vegetation Management

- Annually inspect every pole and structure
- Remove hazardous trees and limbs
- Year-round work in areas at higher wildfire risk



Distribution and Transmission



How you can prepare for outages



Stay in the Know

Update your contact information with us so we can keep you informed.

Login to portlandgeneral.com, visit the PGE app, or call us.



Create an Outage Kit

Plan for household needs and gather what you'll need to stay comfortable, fed and hydrated.

Make sure everyone in your home knows where to find it.



Make a Plan

Keep your family and your home safe during an outage.



Thank you