

March 18, 2026
Sherwood Middle School

Sherwood

Power Together | Community Town Hall



Agenda

- Welcome
- Community engagement
- PGE, electricity use and the grid
- Our customer commitment
- Local growth and transmission
- Westside Upgrade Project
- Battery storage
- Q&A





About PGE

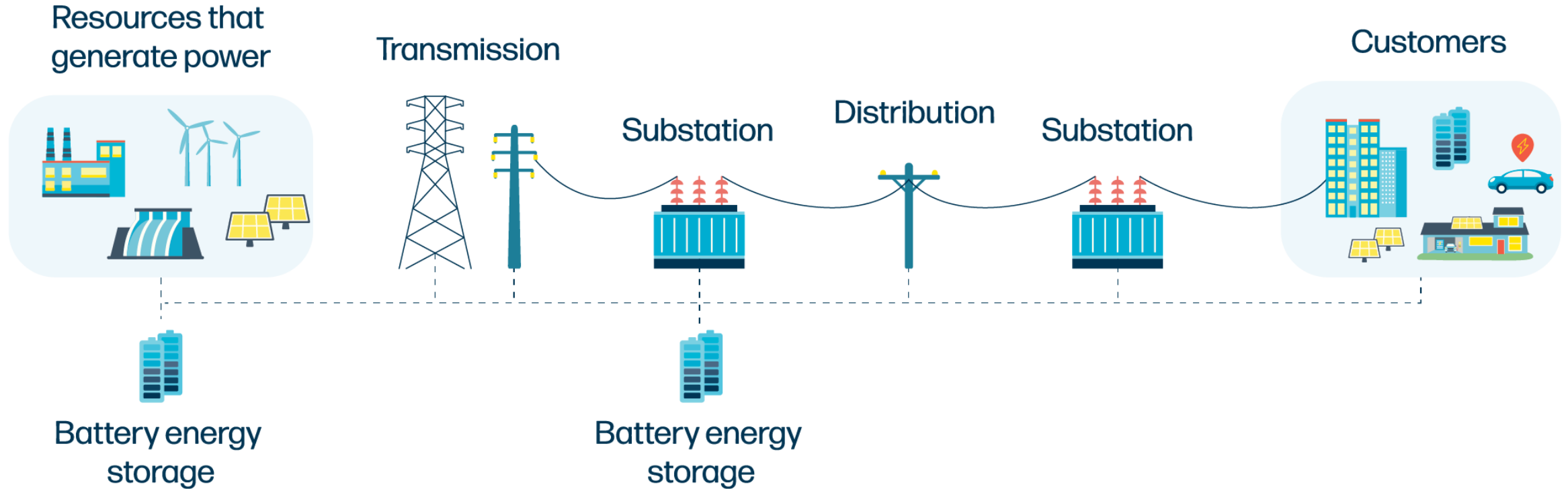
- 1.9 million population
- ~960,000 customers
- 7 counties
- 51 cities
- 4,000 square miles



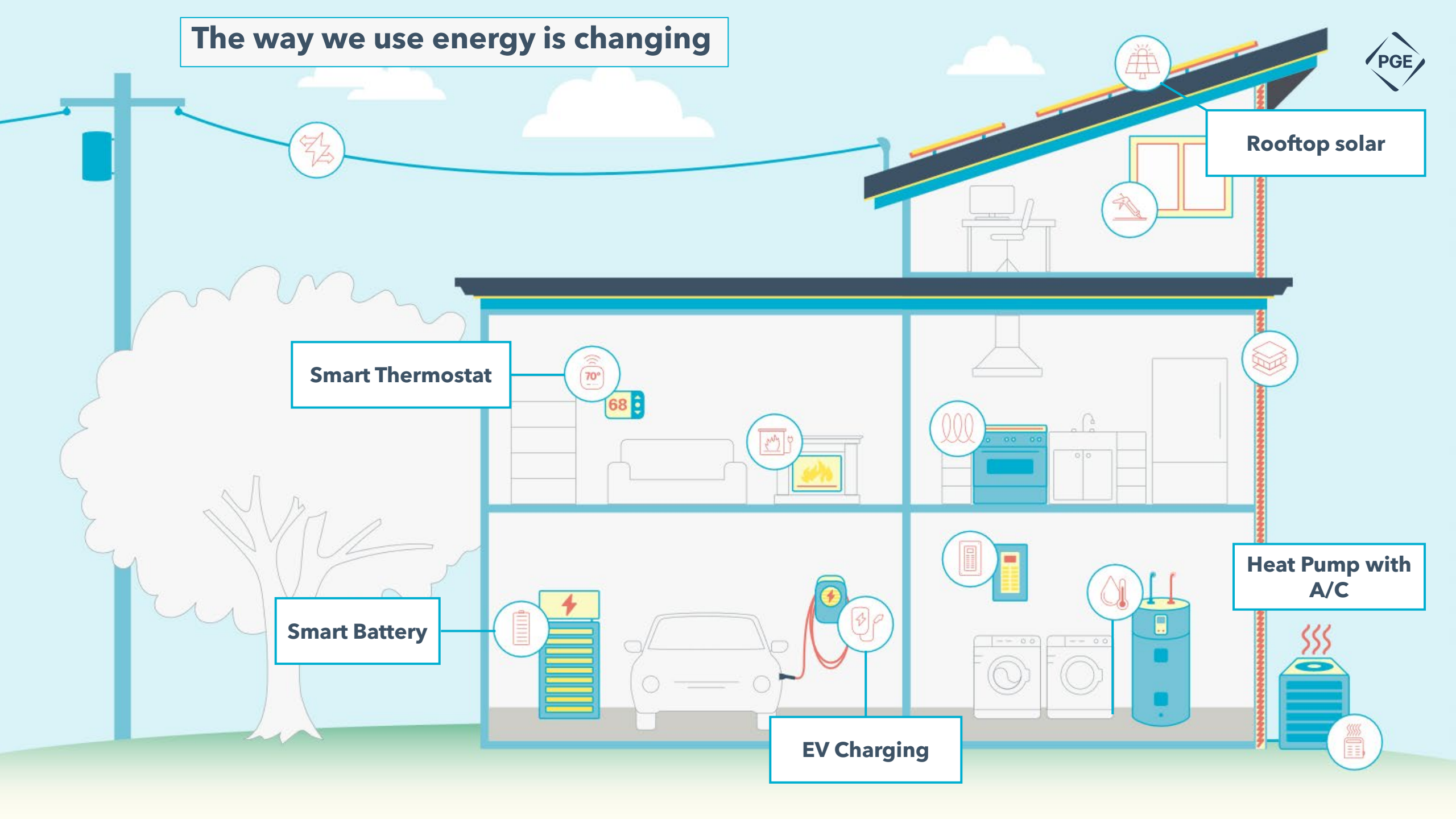
● Hydro	● Coal	 Service territory
● Gas	● Wind	

3,500+ MWs of Generation

The grid is evolving to meet customer needs



The way we use energy is changing



Rooftop solar

Smart Thermostat

Smart Battery

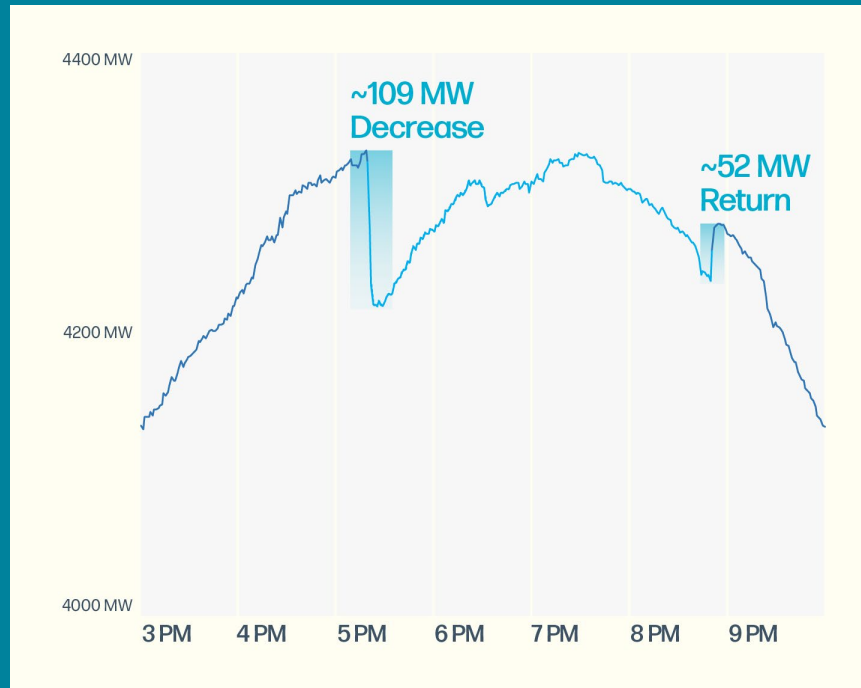
EV Charging

Heat Pump with A/C

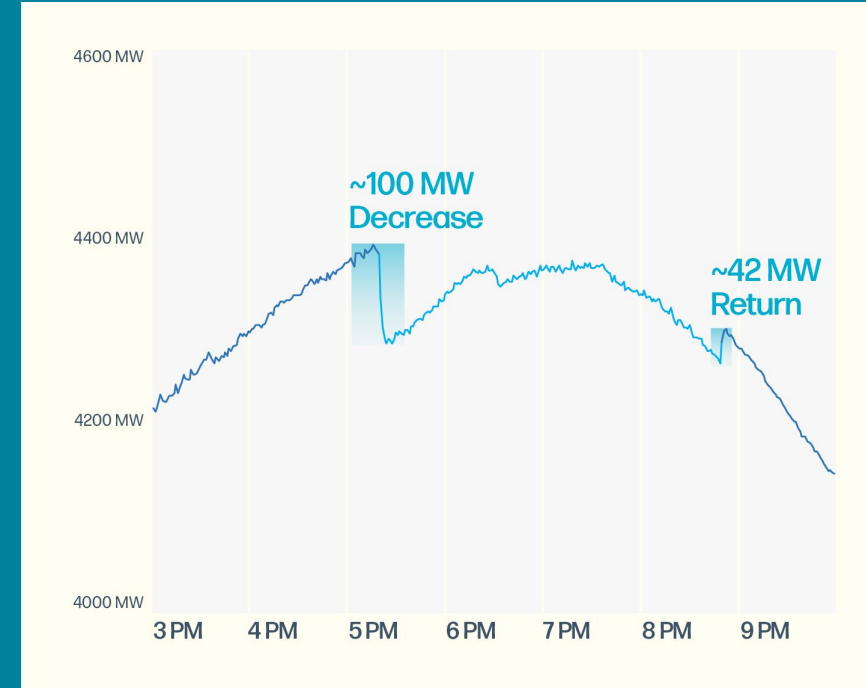
Customers actions make a difference

When demand is high, PGE asks participating customers to reduce their energy use. In turn, customers receive rebates and help keep energy more reliable.

July 8, 2024



July 9, 2024



When customers need help, we're there



PGE supports customers with tools and programs to manage their energy costs including bill assistance, rebates and incentives, and solar and battery programs.



Payment help



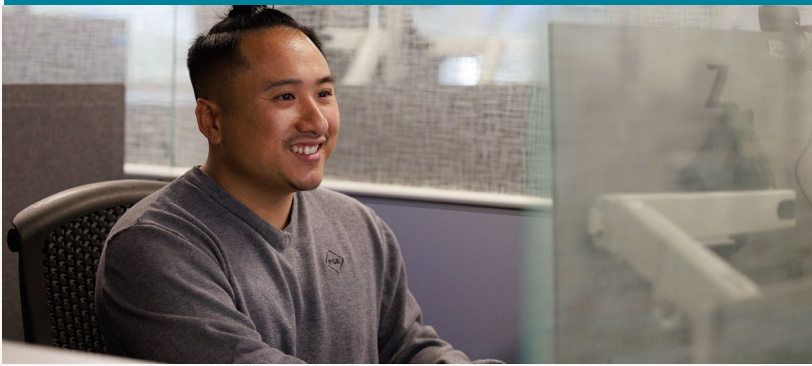
Efficiency, load management, and weatherization support



Income qualified bill discount



Energy assistance programs



Our customer commitment to manage costs

Controlling Operating Costs

- In 2025, we launched our Customer Affordability Commitment - a multi-year program designed to deliver sustained savings in operations and maintenance costs to keep customer bills as low as possible.

Ensuring Fair Cost Allocation

- PGE is fairly distributing the costs of new infrastructure to serve load growth from data centers/manufacturing to protect residential customers from price impacts while supporting economic growth.

Maximizing External Sources of Funding

- We are reducing project costs by optimizing federal tax credits, grants, and other incentives while available.



581%
Population
Growth

Gary Halvorson, Oregon State Archives

78%
Of homes
have AC

#5
In EV sales
nationally

Local growth and energy use

- The Portland metro area has **grown by 66%** since 1990 and Washington County has grown by **96%** in this same time.¹
- Sherwood had **grown by 581%** since 1990!¹
- **78%** of Portland area homes had air conditioning in 2019, a 41% increase since 2011²
- **Fifth largest** retail market for EVs in the nation³
- **21** average number of smart devices per U.S. household, with internet, in 2024⁴
- Washington County has Oregon's largest tech industry cluster, with **\$13 billion** in computers and electronics exports in 2022⁵
- **Ninth largest** state for digital infrastructure, including data centers⁶

1. U.S. Census data
2. [KGW](#)
3. NESCAUM data
4. [Consumer Affairs](#)
5. [Greater Portland, Inc.](#)
6. [Datacentermap.com](#)

Advancing resilience against increased threats



Storms



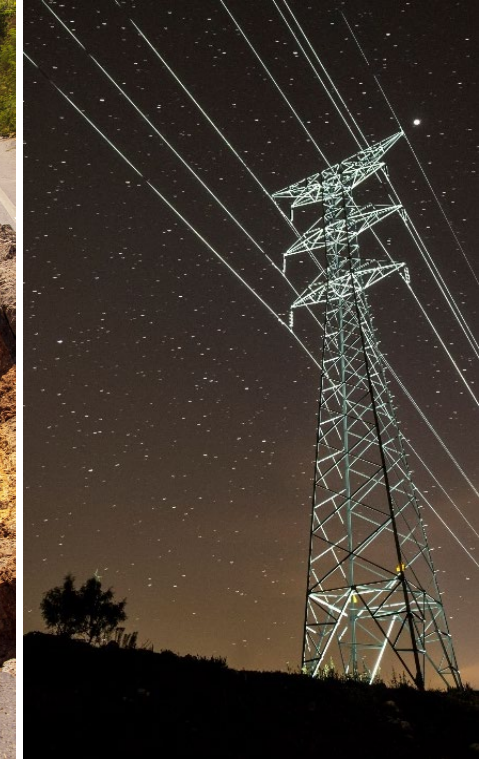
Heatwaves and wildfires



Cyber and physical security



Cascadia earthquake



Regional energy emergencies

Resiliency Against Wildfire

System Hardening

- Overhead to underground conversion
- Ductile iron poles
- Enhanced Powerline Safety Settings

Situational Awareness

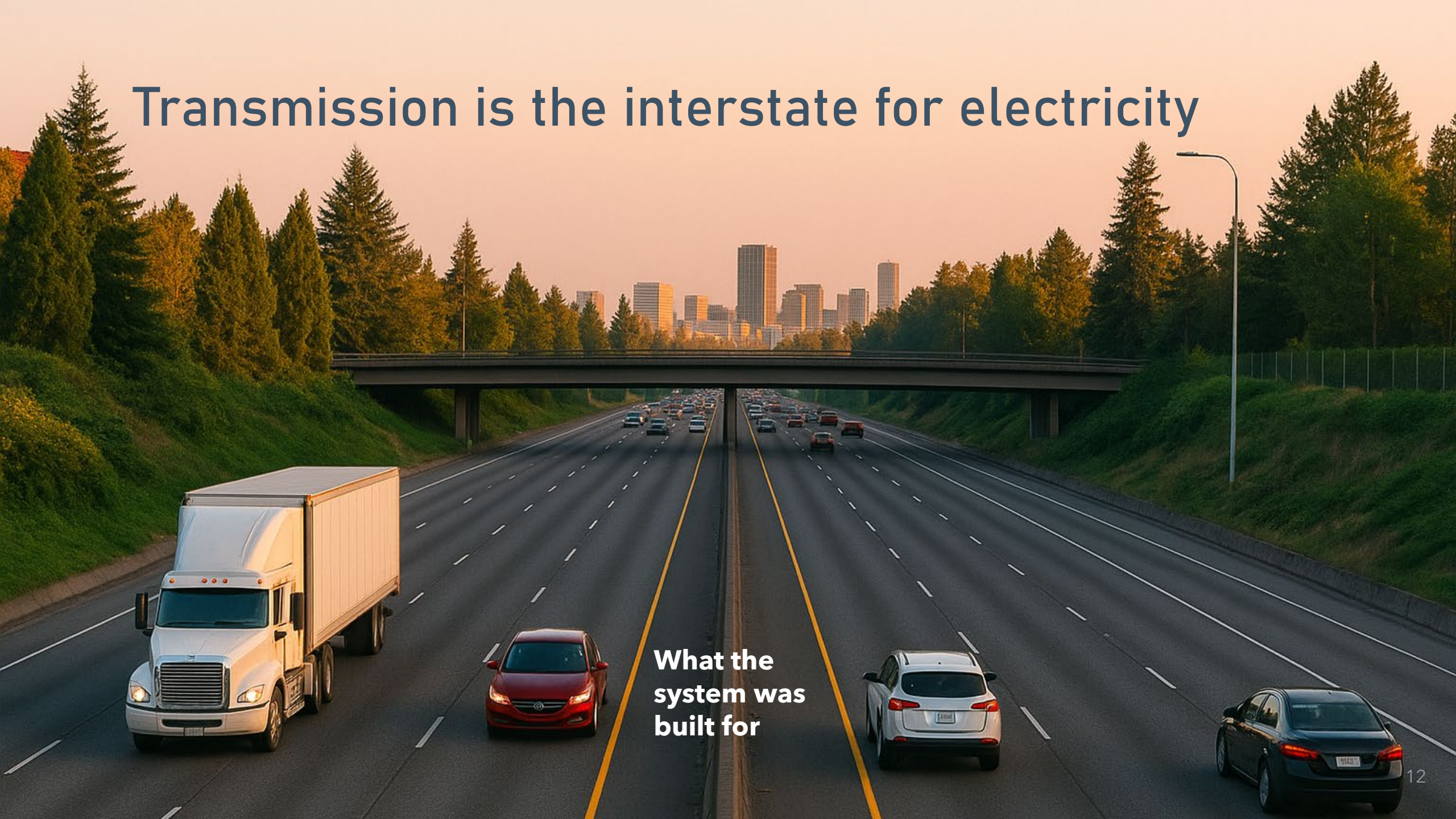
- More than 90 weather stations
- Almost 40 AI-powered fire detection cameras
- Early Fault Detection sensors

Inspections & Vegetation Management

- Annually inspect every pole and structure
- Remove hazardous trees and limbs
- Year-round work in areas at higher wildfire risk



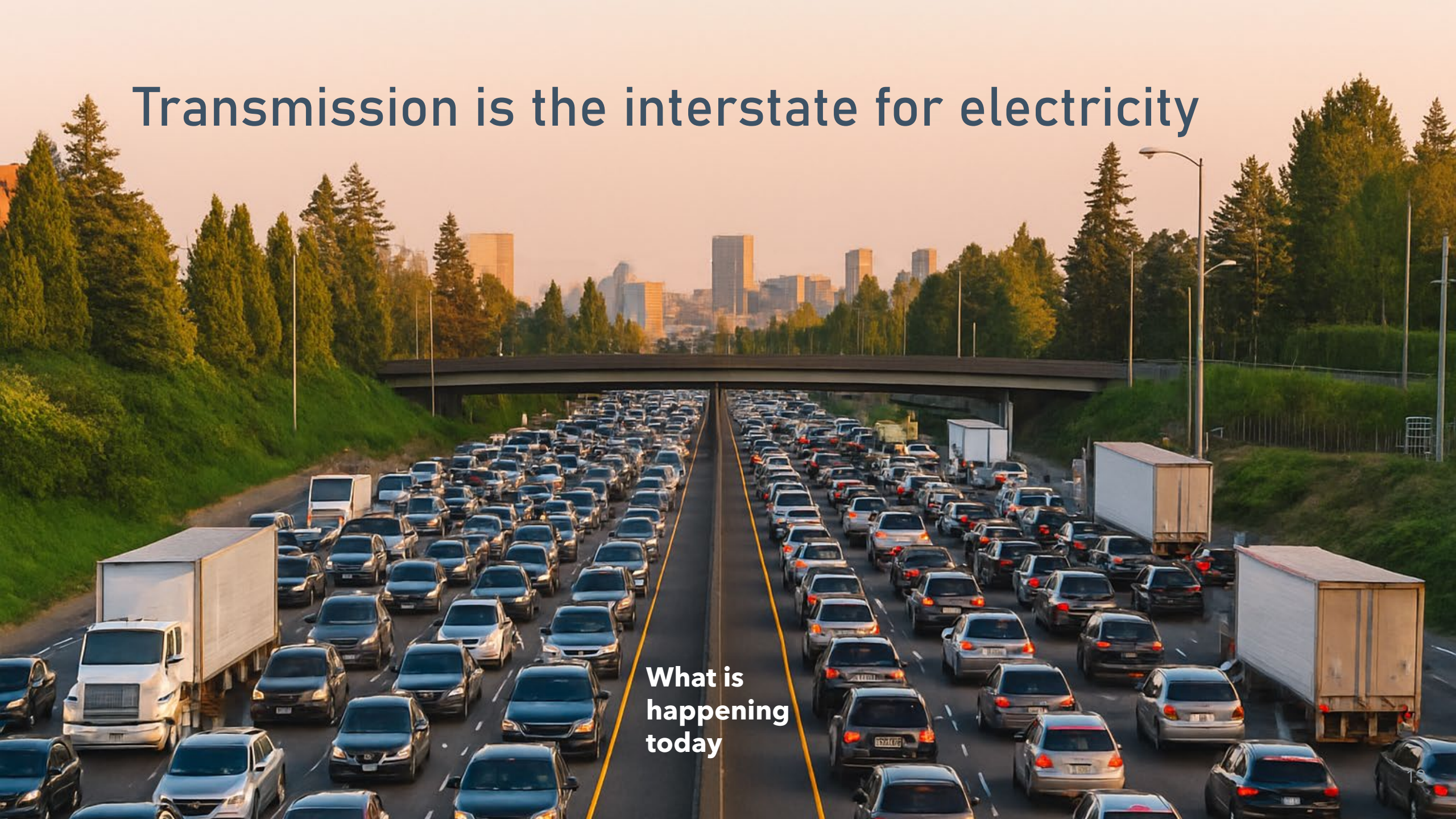
Transmission is the interstate for electricity



What the system was built for

Transmission is the interstate for electricity

What is
happening
today



New technologies can increase capacity, flexibility, efficiency, and reliability



Advanced Conductor are new wires that can carry more electrical current, to make use of existing equipment and rights-of-way



Dynamic Line Ratings use sensors, real-time weather data to use lines to their fullest



Topology Optimization allows grid operators to reroute electricity to lines with available capacity



Advanced Power Flow Control software reconfigures how power flows across the transmission network, around constraints

Westside Upgrade Project



Westside Upgrade Project

Approximately 15 miles in three segments from Wilsonville to Beaverton.

Key Benefits:

- Uses an existing transmission corridor with no additional land needed
- Unblocks a critical transmission artery
- Accommodates surging renewable energy from California
- Stabilizes the regional grid
- Meets growing electricity needs
- Enhances system reliability



Project Construction Timeline



Looking North from SW
Ridder Road at the BPA Pearl
Substation in Wilsonville.

A photograph showing a dirt path leading through tall, yellowish-brown brush and weeds. In the background, there are utility poles with power lines, trees, and a white building. The sky is overcast.

Existing

A photograph showing the same dirt path and brush as the 'Existing' view, but with several tall utility poles and power lines added to the scene, indicating a proposed power line installation.

Proposed

Looking Southwest from SW
Cipole Rd. near Hwy. 99 in
Tualatin.





Thank you